



INSTALLATION INSTRUCTIONS

Thank you for purchasing our decorative Stone Panels. The investment in our panels will greatly increase the value of your home, and result in additional savings by lowering your heating and cooling cost. The panels can be installed inside or outside on most structurally sound clean surfaces.

Panels Décor's urethane panels are easily installed with no special equipment or expertise. Our panels will not absorb moisture, warp, rot or crack. Panels are installed using the appropriate screws. The panels can be installed on any flat surface, including brick or concrete.



Never leave cut edges exposed. Exposed polyurethane will discolor and become obvious with exposure to sunlight. Use Panels Decor touch-up paint or color match with a good quality latex paint.

Any deviation from these standard installation instructions must be made watertight by use of a vapor barrier behind the product and then sealed with grout and painted with touch-up paint.

Limitations: Panels Decor products are intended as wall coverings only and should not be used as pavers or subjected to foot traffic. Panels Decor products do not add to the structural load bearing capacity of the substrate to which it is applied. Panels Decor products are not to be used underwater. Avoid installing in locations which will be repeatedly subjected to abrasion, or repeated contact such as lawn mowers and string trimmers.

Storage - Be sure to store all panels flat, in the box, until ready for installation. Store panels at 65° F when possible. Do not store in direct sunlight before installing.

General Guidelines

Sheathing must be properly fastened to the framing according to building code requirements and/or the sheathing manufacturer's recommendations. Panels Décor products should be applied over a sheathing that provides a smooth, flat, solid, non-expansive, stable surface. For exterior applications make sure sub wall assembly is weather tight before applying Panels Decor. Wall sheathing should be weather-resistant, or covered with a weather-resistant barrier such as fanfold insulation, house wrap or building paper. Consult local building codes for complete information and requirements.

Panels Decor products alone may not constitute a waterproof installation!

Flashing and caulking should be added as needed in such areas as transition from Panels Decor panels, ledgers and/or trims to other siding products, windows, and doors to control moisture and protect the sub wall assembly. Urethane paneling expands and contracts with temperature changes (average shrinkage on exposed paneling is about .039" per foot), so **install panels with appropriate number of screws.**

ALWAYS WEAR PERSONAL PROTECTIVE EQUIPMENT (PPE) TO PREVENT INJURY!



Drywall/OSB Preparation - The OSB or drywall must be well attached to the framing studs.

Tools You Will Need:

⇒ Appropriate flat countersunk Phillips screws

| Screws | Drywall/Wood Substrates | Concrete/Masonry Substrates | Steel/Metal Substrates |
|-----------------------|-------------------------|-----------------------------|--------------------------|
| Interior Installation | Drywall Screws | Concrete/Masonry Screws | Self Taping Metal Screws |
| Exterior Installation | Deck Screws | | |

⇒ Caulk Gun or Trowel

⇒ Screwdriver (battery-operated/electric)

⇒ Drill (battery-operated/electric)

⇒ Drywall Rasp, sandpaper or sanding block

⇒ Hacksaw, jig saw, band saw or table saw

⇒ Stud finder, Level & Chalk Line

Mechanical Fastening

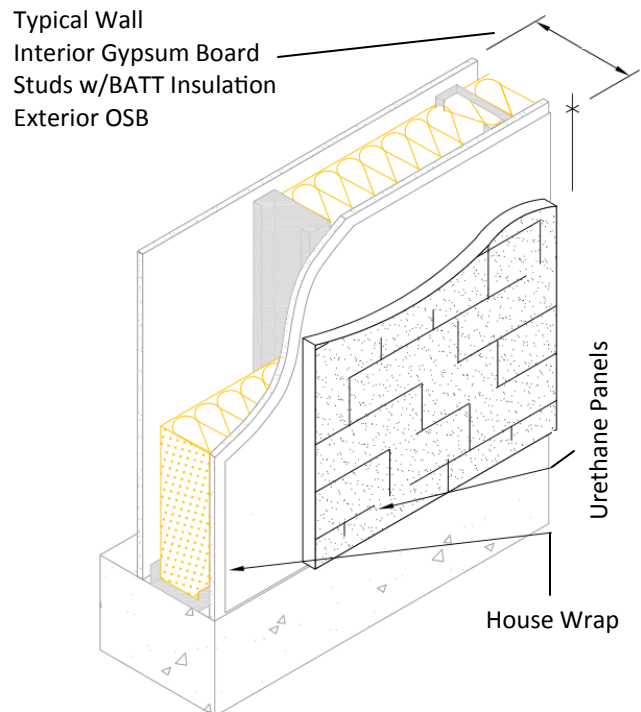
Horizontal Mechanical Fastening

- ◇ 8" x 36" panels
 - * Use the screw guide points.
- ◇ 24" x 48" panels
 - * Place the screws on the top, middle and bottom of the panel in the most inconspicuous space, installed 8" (eight inches) apart in order to hit most of the supporting studs.
 - * Screw through both the panel and substrate and into a stud when possible. We recommend that the screws must be long enough to penetrate at least 1/2" (half an inch) into the studs behind the OSB / drywall or masonry wall. Use a stud finder to locate attaching points.
 - * Screw no less than 1" from each end of the tongue as well as in the bottom right corner of the tongue.
 - * All screw heads should be counter sunk about 1/8" (one eighth of an inch) into the panels.

Vertical Mechanical Fastening

- ◇ 8" x 36" panels
 - * Use the screw guide points.
- ◇ 24" x 48" panels
 - * A minimum of 3 (three) screws set along an inconspicuous place at the edge of every finger joint. It is recommended that screws be staggered to ensure a seamless appearance.
 - * All screw heads should be counter sunk about 1/8" (one eighth of an inch) into the panel.

TO ENSURE FIRM ATTACHEMENT TO AN UNEVEN SUBSTRATE, ADDITIONAL FASTENERS MAY BE REQUIRED!



1

Installation should begin at the most visible & prominent corner and the panels should be set so as to move away from this location. Establish the layout and set the level line.



2

Some field modification on the panels may be necessary such as additional sanding or cutting of the undercut or the edge to ensure a proper fit installation.



- 3** Use the appropriate screws to secure the panel to the wall. Repeat steps 1-3 until first row is complete.

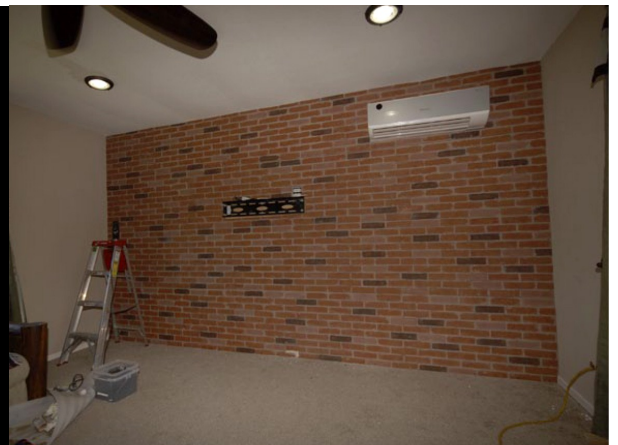


- 4** Start next row -
For a seamless
look, offset each
row by 1/2 (one
half) sheet.



5

- Repeat steps 2-4 until project is complete.





- 1 Preferably grout the sides of the panels that will be butting together.



- 2 When pressing panels firmly together some grout should squeeze out of the seam.



- 3 Remove any excess grout using a paper towel.



- 4 Using a wet paint brush, smooth the remaining grout into the panels. Use a horizontal (side to side) motion to blend the grout color into the panels. Then let the grout dry.



- 5 If your panel line has touch up paint available, you can use it on top of the grout to achieve a better blended color. If your touch up kit comes with additional colors, blend in the appropriate color as needed.



- 6 Using the touch up paint, color in the remaining grout. Use a horizontal (side to side) motion to blend the paint color into the panels. When dry the panels should appear almost seamless



PAINT KIT CONTENTS: 2 or 3 CONTAINERS DEPENDING ON FINISH – VARIOUS PAINT SHADES

How To TOUCH-UP SMALL AREAS

Scratches and small damaged areas can be touched up easily. Not all colors supplied are necessary for the touch up job. Size, color and depth of damaged area will determine which touch up colors to use.



1. Dilute latex touch up paint with about 30% water in a small plastic or paper cup.

2. Apply small amount of diluted paint to moist cloth, small brush, sponge, or Q-tip. Dab into desired area. If applied to undamaged areas, wipe quickly with clean damp cloth. Start with lighter colors first, let color dry 10 to 15 minutes before applying the darker shades.



3. Wipe excess paint off immediately. It is better to apply a small amount in translucent shades and darken the area gradually to blend in. Keep dabbing and blending with clean damp cloth until repaired area blends in with its surroundings.

NOTE: You might have to mix different colors to achieve different shades. Add water as needed and dab excess paint off for a more transparent look.

LARGER REPAIRS

Small pieces of broken stones can be glued back with super glue or 5 minute epoxy (glue not included); then retouch with colors in the touch up kit if necessary.

If a broken piece is missing or repairing a deep gouge, fill the damaged area with bondo (may be purchased separately at any local Do-It-Yourself store) imitating the stone texture. Apply colors in the touch up kit as needed. (See above instructions)